

## ETTU / ITTF Annual Coaching Conference 2018

### REPORT

The EUROPEAN TABLE TENNIS UNION in cooperation with the ITTF High Performance & Development Department and the FRENCH TABLE TENNIS ASSOCIATION held its Annual Coaching Conference in **Paris (France), 22 – 24 October 2018**.

It is part of the ITTF/ETTU Development Program and it is primarily intended for all European coaches, but coaches from other continents were welcome too. We had one confirmed entry from Thailand that has been cancelled later unfortunately.

For *1 coach per National Association* the full costs (full board and lodging in double occupancy) has been covered by ETTU, but it was possible to enter more coaches on own cost and some Associations took this possibility. The agreed price was EUR 120,- in double occupancy and EUR 130,- in single occupancy.

The French TTA did not provide pick up service from the airport, but due to the great public transport system of Paris everyone could reach the venue without problem.

### Official Program

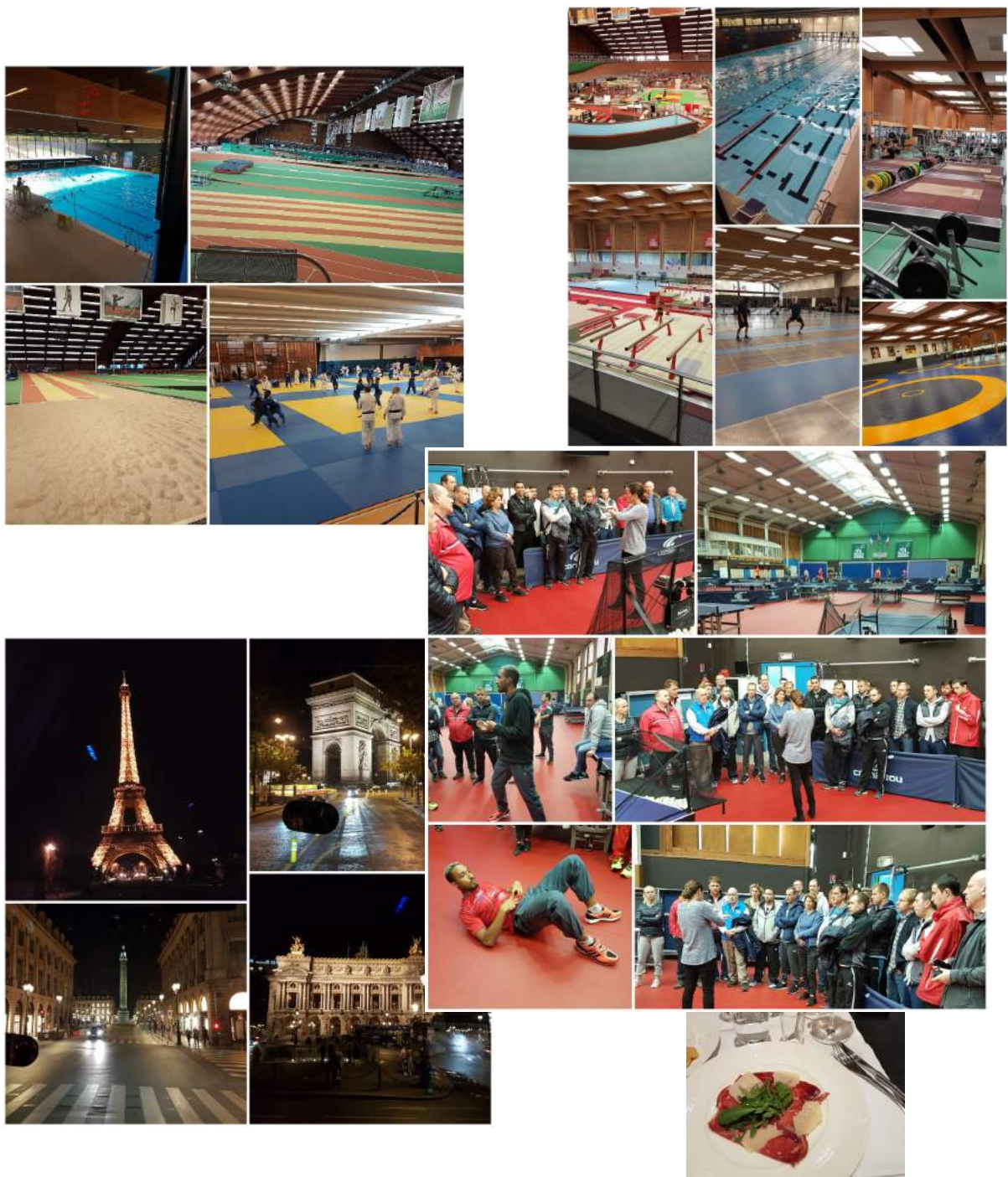


- „New approach of technique and tactics in table tennis“ - **Liu Yan Jun (AUT)**
- „The main guideline in the development of young players 14-18 years old “ – **Mikael Andersson (SWE)**
- „Neurophysiological determinants of visuomotor reaction time in table tennis” – **Prof. Dr. Andreas Mierau & Dr. Thorben Huelsduenker (LUNEX University Luxembourg)**



## Additional Program

- Guided tour around INSEP with introduction of the training places of many out of 21 different sports that practice at INSEP on daily basis. Table tennis as of course included. It was great experience for all coaches I believe.
- Paris by night - Sight-seeing tour by bus (Tour Eiffel, Notre Dame, Opera, Triumph, Champs Elysee, Place Concorde, Louvre, etc.)
- French gastronomy -Dinner outside of INSEP in a nice restaurant that was open during this evening for us only.



### Venue and Accommodation:

INSEP Paris – The French National Sport Institute of Education and High Performance was perfect venue for our Conference. The rooms were simple but clean and appropriate and we've enjoyed sports appropriate high quality food in the self-service restaurant.



### Participants

27 coaches out of 22 Associations participated actively. The female participation was rather low unfortunately, only 3 ladies attended.

1	Goran Munivrana	CRO
2	Petr Nedoma	CZE
3	Aled Howell	ENG
4	Gorak Fernández	ESP
5	Vallot Vainula	EST
6	Heikki Sool	EST
7	Kätlin Latt	EST
8	Christian Gaubert	FRA
9	Aleksey Yefremov	GEO
10	Richard Prause	GER
11	Diana Zerdila	GRE
12	Shimon Rabinovich	ISR
13	Tal Winner	ISR
14	Martin Tupper	JER
15	Matas Vilkas	LTU
16	Dragos Olteanu	LUX
17	Philippe Moulin	LUX
18	Franeta Jovica	MNE
19	Paul Haldan	NED
20	Yana Timina	NED
21	Gundars Ruis	NOR
22	Piotr Szafranek	POL
23	Dmitrii Chekurov	RUS
24	Paul Rawlings-Jackson	SCO
25	Lasan Sas	SLO
26	Jaka Golavsek	SLO
27	Josh Morgan	WAL

From ETTU side the Deputy President responsible for development Ivo-Goran Munivrana attended the conference alongside of Zita Pidl who replaced the Development Manager Neven Cegnar who could not attend due to other obligation at the ITTF World Cadet Challenge in Japan.

### Acknowledgements

On behalf of ETTU sincere thanks has to be expressed to:

- the ITTF and its High Performance & Development Department for providing financial support to make so many activities possible
- the French TTA in particular Mrs. Rozenn Jacquet-Yquel and her colleagues at INSEP who made our stay pleasant and unforgettable
- to all of our lecturers (and their Associations) for their professional prepared presentations
- to all ETTU member Associations that have sent coaches to the Conference
- to all present coaches who made the event interactive with many questions and comments
- to all others who supported our activity in any way

